



**An SDVOSB – Providing
Comprehensive Environmental
and Civil Design-Build Solutions**



Company Overview

- SDVOSB/VOSB/SB
- 40% Veteran Workforce
- Environmental Investigation, Design, Remediation, and O&M
- Environmental Compliance
- Civil Infrastructure and Facility Design-Build
- Support Services

NAICS Codes

541620 Environmental Consulting
562910 Remediation
541330 Engineering
541320 Landscape Architecture
236 Construction of Buildings
237 Heavy/Civil Engineering Construction
238 All Other Specialty Trade Contractors

Details

Licensed General and Hazardous Waste Contractor #957419 A Haz
CAGE Code: 51H04
DUNS: 786512058
Bonding Capacity
Accept Gov CC
Registered in CCR and ORCA

Point of Contact

Mike Bilodeau, President and CEO
619-280-3278 office
619-972-9968 mobile
mikeb@iosdv.com

Corporate Office

IO Environmental & Infrastructure, Inc.
2840 Adams Avenue, Suite 301
San Diego, CA 92116
619-280-3278
Fax 619-677-5648

Website: www.iosdv.com

IO Environmental & Infrastructure, Inc. (IOEI) is a certified Service-Disabled Veteran-Owned Small Business (SDVOSB), Veteran Owned Small Business (VOSB), and Small Business (SB) headquartered in San Diego, California. Founded in 2006, the company offers wide ranging technical expertise in environmental services and civil design-build.

Our clients include federal, state, local, and municipal governments as well as private companies. We also partner with large federal contractors to assist them in meeting their diversity goals.

Over the last six years, IOEI has experienced a steady, controlled growth, managing over \$15 million in contracts. Our strategic approach is cost-effective, low-risk, and highly responsive to client requirements. This successful approach, combined with our high quality performance and excellent health and safety record, has resulted in consistent client satisfaction, repeat business, and new contract awards.

IOEI can self-perform critical schedule and high-hazard project elements such as demolition, remediation, removal, earthwork, and installation of crucial components. Self-performance enables us to implement the best value, lowest risk solutions by enabling us to make true *make-or-buy* decisions. This distinguishes us from firms that only use a more costly construction management approach.

IOEI provides full-service solutions for:

- Environmental investigation, design, remediation, and Operations and Maintenance (O&M)
- Environmental compliance
- Design and construction of civil infrastructure and facilities
- Ancillary services
 - Staff augmentation
 - Information Technology (IT) personnel and services
 - Equipment rental
 - Laboratory services
 - Project support services



Environmental Services

IOEI implements both proven and innovative environmental investigation and remediation techniques that minimize client costs and risk, and are readily acceptable to regulators. We have a thorough understanding of the Comprehensive Environmental Response, Compensation and Liability Act (CERCLA) and the Resource Conservation and Recovery Act (RCRA), and how these processes apply to government and private sector sites. IOEI's remedial experts implement strategies focused on site closure, while quickly addressing changing site conditions with minimal impact to budgets and schedules. We also have experience in Performance Based Remediation (PBR) programs and projects.

Contaminant Types

IOEI's environmental professionals deliver services to address every contaminant type—from asbestos and lead-based paint removal to difficult long-term projects involving hydrocarbons and solvents in groundwater, to high-hazard remediation activities involving MEC, UXO, and radiological contaminants.

Investigations

- Phase I and II Environmental Site Assessments (ESA)
- Remedial Investigations (RI)
- Feasibility Studies (FS)
- Bench and Pilot-scale Treatability Studies
- RCRA Facility Investigations
- Sampling and Analysis
- Groundwater Modeling
- Geophysics
- Data Management/Quality Assurance

Remedial Design

- Conceptual Site Models
- Conceptual, Bench, Pilot-Scale, and Full-Scale Designs
- Plans and Specifications
- Value Engineering

Remediation

- Enhanced In-Situ Bioremediation (EISB)
- Excavation
- Groundwater Pump and Treat
- In Situ and Ex Situ Treatment
- In-Situ Chemical Oxidation (ISCO)/Reduction (ISCR)
- Multiphase Extraction (MPE)
- Permeable Reactive Zones (PRZs)
- Soil Vapor Extraction (SVE)
- Landfill Capping
- Munitions Response Services (MMRP/UXO/MEC)
- UST/AST Removal and Replacement
- Transportation and Disposal

Project Delivery Methods for Environmental and Civil Projects

Turnkey – Design, construction, and closeout based on client-provided performance specifications.

Design-Build (D-B) – Single responsibility for design and construction, including drawings, permitting, construction, management, scheduling, quality control, and project closeout. IOEI can serve as Architect of Record and/or Contractor of Record.

Design-Bid-Build (D-B-B) – A discreet line-item bid for RI, FS, RD, RA, O&M or construction of a building, facility, or infrastructure project.

Decontamination, Deactivation and Decommissioning

- Radiological Surveys
- Decontamination and Decommissioning
- Deactivation
- Demolition
- Radioactive Mixed Waste Treatment
- Waste Characterization, Handling, and Disposal
- Construction of Covers/Secondary Containment Units
- Integrated Work Control Planning (IWCP)
- Integrated Safety Management System (ISMS)

Operations & Maintenance

- Remedial Action Optimization (RAO)
- Long-Term Operations and Maintenance
- Monitoring

Environmental Compliance

- Archaeology
- Air quality/Title V
- Biology
- Stormwater
- NPDES
- NEPA/CEQA
- Section 106 and 110 Compliance
- TSCA compliance
- Field Surveys
- Equipment Selection and Installation
- Construction Monitoring
- Wetlands Mitigation



Civil Infrastructure and Facility Design-Build



IOEI provides comprehensive design-build and design-bid-build construction services for a wide range of civil infrastructure (horizontal) and facility (vertical) construction projects. We design and construct new systems and facilities and provide full-service repair, renovation, and expansion of existing facilities.

Our horizontal infrastructure services include both wet and dry utilities: water supply, sanitary sewer, stormwater, gas, and electrical. It also includes roads, runways, concrete pads, sidewalks, earthwork, berms, trench drains, and erosion control.

Our vertical building construction services include new construction as well as comprehensive repair, renewal, rehabilitation, remodeling, ADA compliance construction, force protection measures, and tenant improvements. Building types include dormitory, single, and multi-family housing, as well as industrial, commercial, and institutional buildings such as airport terminals, office buildings, medical clinics, hospitals, training facilities, community centers, storage facilities, historic buildings, and support facilities.

Comprehensive Design-Build Services

Engineering Design for Vertical and Horizontal Projects (Title I)	Construction Management (Title II)	Self-Perform Design-Build
<ul style="list-style-type: none"> Design surveys Design charrettes Conceptual designs Construction estimates Interim and final designs Construction plans and specifications Value engineering and constructability review 	<ul style="list-style-type: none"> Bid preparation and proposal review Design constructability review Procurement Permitting Construction oversight Cost and schedule control Quality control Inspection and testing Health and safety oversight 	<ul style="list-style-type: none"> Architects/Engineers Designers Procurement Cost & Schedule Control Construction Managers Site Superintendents Health and Safety Officers Quality Control and Inspectors Equipment Operators Laborers and Tradesmen

Personnel

Program Managers	Engineers	Geologists	Wetlands Specialists
Project Managers	Chemical Engineers	Landscape Architects	Laborers/Tradesmen
Construction Managers	Civil Engineers	Natural Resource Specialists	Senior UXO Supervisors
Archaeologists	Mechanical Engineers	Environmental Scientists	UXO Safety Officers
Biologists	Environmental Engineers	Environmental Technicians	UXO QC Supervisor

IOEI Provides Comprehensive Stormwater Compliance Solutions

Effective September 2011 the California State Construction General Permit (CGP) requires that a Qualified SWPPP Developer (QSD) prepare and stamp your project's Stormwater Pollution Prevention Plan (SWPPP). A Qualified SWPPP Practitioner (QSP) must oversee the implementation of the SWPPP. IOEI's certified QSDs and QSPs have attended a SWRCB-sponsored training course, passed an examination, and are registered with the California Stormwater Quality Association (CASQA).

Installation of SWPPP Measures





Notable Clients

Government Agencies Department of Energy NASA U.S. Army Corps of Engineers U.S. Navy Veterans Affairs Caltrans County of San Diego Imperial County	Government Contractors AECOM Battelle CH2M Hill Innovative Technical Solutions, Inc. Insight Kleinfelder NOREAS Parsons Richard Brady & Associates SHAW	Stantec Consulting Tetra Tech EC, Inc. Trevet URS Private Clients California Edison KM Industrial Stantec/BP Oil
---	--	--

Exceptional Record of Past Performance

IOEI is a successful SDVOSB and SB. We have sustained outstanding growth in the last five years to reach an estimated 2011 revenue of \$4.9 million.

IOEI has been awarded four large federal prime contracts with over 33 awarded Task Orders (TOs), in addition to more than 100 subcontracts. IOEI's Architect-Engineer Contract Administration Support System (ACASS) ratings have all been Outstanding or Very Good.

100% of IOEI's Performance Ratings Have Been Exceptional/Very Good

Exceptional Performance —\$1.7 million Treatability Study, NAVFAC SW, IRP Support, MCB Camp Pendleton, California

"[IOEI] was tasked with implementing a treatability study to evaluate the effectiveness of bioremediation and chemical remediation methods for toxaphene and dieldrin on a 370 acre agricultural field that was slated to become a housing development. The project was time critical, driven by a congressionally mandated schedule, and had visibility all the way up the chain to DC. The contractor was instrumental in the successful completion of this project on time and within budget, providing the Navy and the Marine Corps with the information they needed to base a \$25 million remediation decision on. The documents were of very high quality, and the contractor did an excellent job of managing the competing vendors. This contractor has done outstanding work on all awarded task orders, and the Navy can count on them to be responsive, diligent and mindful of the budget."

-- Jennifer Dunaway, Supervisory Environmental Engineer, NAVFAC SW

Contract Vehicles

- NAVFAC Southwest – \$25 million IDIQ Environmental Restoration EMAC (SDV JV) N62473-09-D-1212
- NAVFAC Midwest – \$20 million IDIQ Environmental EMAC (SDV JV) N40083-11-D-0028
- USACE, Northwest Division – \$25 million IDIQ Environmental Remediation Services MATOC (SDV JV) W9128F-10-D-0045
- CHPRC (DOE) Basic Ordering Agreement for Professional Services (IO-Lucas JV)
- Tetra Tech EMI - NAVFAC SW Remedial Action Contract (RAC IV and RAC V)
- Tetra Tech EMI - NAVFAC SW Radiological EMAC at Hunters Point Shipyard, CA
- CH2M Hill - Multiple Information Technology (IT) Support Contracts
- Kleinfelder-CH2M Hill (KCH) – Basic Ordering Agreement

IOEI is a SDVOSB with a real commitment to provide employment, training, and growth opportunities to veterans. After a career ending service-related disability and recuperation in DoD hospitals, Mike Bilodeau, CEO established a personal mission to assist other veterans. IOEI's goal is to achieve a 60+% veteran staff and our commitment reflects to our country's increased focus on veterans' well-being.



NAVFAC SW IDIQ Environmental Restoration Work at Marine Corps Installations

IOEI (as part of the SDV JV) collaborates on a range of environmental restoration and compliance task orders at Marine Corps installations within the NAVFAC SW footprint to support the Navy's compliance, IRP, MRP, UST, and other environmental programs. The contract currently includes 22 task orders at Camp Pendleton, Miramar, Barstow, 29 Palms, and Bridgeport. We have performed investigations, remediation, sampling and analysis of analytical data, assessed risks and human health, and prepared removal action closure reports. Task orders include:

- Miramar Landfill Remediation, MCAS Miramar, CA
- UST Removal and other IR support
- Remediation System O/M and GW Monitoring
- Groundwater Monitoring and Soil Vapor Extraction
- Groundwater Investigation at San Louis Ray PPV
- Groundwater Investigation at San Louis Ray PPV II
- Time Critical Removal Action for Impacted Groundwater
- IR Well Database
- Miramar Landfill Cap, MCAS Miramar, CA
- Soil Removal and GW Monitoring UST 53424, 1331, and 2264-1/2 Site Pull
- Long Term Monitoring Barstow
- GW Sampling/Monitoring, Workplan, and SAP
- FS/UST Area 43 Tank Pull
- Site 62507 Remediation
- Site 150 Site Inspection and Soil Sampling
- UST Database
- BMP Maintenance
- Agricultural Field Sampling



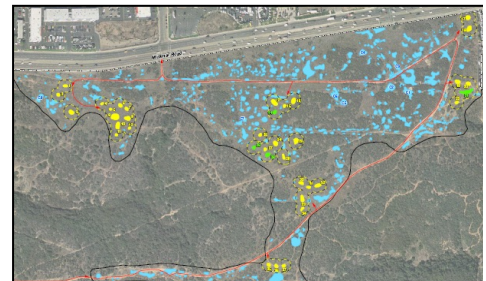
Phase I & II ESAs at Stuart Mesa Agricultural Fields, MCB Camp Pendleton, CA

IOEI performed a hydrogeological study to identify the source of groundwater at three former UST sites (18 monitoring wells) to test for pH, metals, ammonium, nitrate, sulfate, sulfide, total iron, and ferrous iron to assess whether low pH was the result of human activities or oxidation of metal sulfide minerals. The project included groundwater sampling of 18 wells, laboratory analysis, comparison to historical data to assess whether issues were recent or long-standing, and a spatial analysis to pinpoint a source.

IOEI also performed a Phase II Environmental Site Assessment (ESA) at the Stuart Mesa agricultural fields located at MCB Camp Pendleton. The purpose was to collect sufficient information to identify further environmental conditions. The investigation included several operational areas with the 380-acre site. The property had been utilized for farming for over 70 years.

Veterans Administration Phase I, Vernal Pool Construction at the Ft. Rosecrans National Cemetery, Marine Corps Air Station (MCAS) Miramar, CA; \$800,000 – Phase I; Phase II pending

As part of expansion of the Fort Rosecrans National Cemetery, IOEI offset construction impacts to vernal pools—seasonal depressional wetlands—from off-road vehicles, utility easements, and unauthorized dumping. The San Diego fairy shrimp and other species inhabit these pools. IOEI restored existing vernal pools and constructed new vernal pools. We performed brushing, grading, fencing, revegetation, BMP implementation, and one year of site maintenance. Excavation work was performed within 33 different vernal pool clusters using care to avoid impacting sensitive species both in and around the vernal pools.



Map of Vernal Pools at Ft. Rosecrans National Cemetery



Technical Support to Tetra Tech EC on Multiple Task Orders under NAVFAC Southwest Division Remedial Action Contracts – RAC IV, RAC V, and NAVFAC SW Radiological EMAC

Since 2008, IOEI has supported 37 projects under two prime contracts at Hunters Point Shipyard, Alameda Point, and Crows Landing in the San Francisco bay area, CA; and Jackson Park in Bremerton, WA. IOEI consistently delivers high-quality, simultaneous, multimedia, compliance and restoration TOs. IOEI provides three dedicated staff at Hunters Point Shipyard, including a technical writer, data analyst, and archaeologist, as well as a part time QC Manager.

Geotechnical Testing and Consulting, Alameda Point, CA. In support of site restoration activities including backfilling and storm drain installation, IOEI provided nuclear gauge field compaction, moisture testing, and laboratory testing for geotechnical soil properties followed by report preparation.

Archeology Technical Support, Hunters Point, CA. At HPS, IOEI provides a degreed Archaeologist to assist with sewer removal activities in archaeological sensitive areas. The activities include excavation oversight, preparation of daily activity reports, project communications support, meetings, progress reports and presentations, and assistance in the preparation of an Archaeological Report.



*IOEI's UST Removal at Site 13
Camp Pendleton, CA*

Waste Management, Hunters Point, CA. IOEI provides waste management services for non-hazard recyclable construction debris.

Health Physics and Air Monitoring, Hunters Point, CA. IOEI provides health physics support for the Parcel C Storm Drain and Sanitary Sewer (SD/SS) removal project, including ambient air monitoring stations, sampling supplies, and the power supply necessary for the operation and maintenance of the monitoring equipment. IOEI supplied high-volume and medium-volume air samplers. The air monitoring program included sampling for total suspended particulate (TSP), PM10, asbestos, and manganese. The project was completed in accordance with the current Base-wide

Radiological Control Plan, Base-wide Storm Drain and Sanitary Sewer Work Plan, and all Tetra Tech Radiological SOPs and Work Instructions. **Site Support Services, Hunters Point Shipyard, CA.** IOEI provides Tetra Tech with wide ranging site support including office trailers, fencing, storage containers, heavy equipment, truck rental, dewatering equipment rental, water, waste management, and analytical services.

Stantec/BP Oil, Vinville Facility, SVE System Optimization, Southgate Distribution Terminal, British Petroleum, Long Beach, CA, \$1.5 Million

IOEI performed Remedial Action Optimization (RAO) at British Petroleum's Southgate Distribution Terminal, Long Beach. The project included installing a hard piping system for an operational Soil Vapor Extraction System (SVE). Three groupings of wells were using a vacuum truck at each site. IOEI tied each set of wells to a main extraction manifold to eliminate the need for the vacuum truck. IOEI managed soils and demonstrated correct chain of custody procedures.



*Sampling at Agricultural
Fields*